

How does BIM Facilitate better Management of Change (MOC) in Complex Construction Projects?



BUILDING INFORMATION MODELING, FROM CHAOS TO INSIGHT

In the intricate realm of constructing billion-dollar manufacturing facilities, reducing the cost of ownership can lead to substantial savings. At Access Sciences, our team of BIM consultants offer tailored BIM implementation plans to ensure a seamless transition from CAD to 3D and BIM.

Leveraging our extensive knowledge and experience, we work closely with clients to develop BIM Implementation Plans (BIPs) that are easy to integrate and manage, facilitating effective Management of Change (MOC) processes.

CHAOS CAN OCCUR AT ANY STAGE OF AN ASSET'S LIFE CYCLE

Managing construction projects with multiple contractors across various locations globally presents significant challenges, particularly in delivering to Operations & Maintenance (O&M). The use of diverse design software packages by these contractors further complicates the environment. Access Sciences has certified experience with multiple software packages and can consolidate them into a single, standardized format that is accessible and comprehensible to all stakeholders.

OUR APPROACH

Comprehensive BIM Audit: Our process begins with a thorough BIM Audit, where our team evaluates the client's specific requirements. This audit helps us identify key areas for improvement and recommend optimal solutions.

Customized BIM Implementation Plan: Based on the insights from the BIM Audit, we provide guidance on developing a BIM Implementation Plan that adheres to industry standards while also meeting your unique needs.

WHAT WE DO

TREAT YOUR INFORMATION AS A STRATEGIC ASSET

Our partnership enhances operational efficiency and capability, aligning construction stakeholders with the company's quality standards and supporting continuous innovation and reliable delivery.

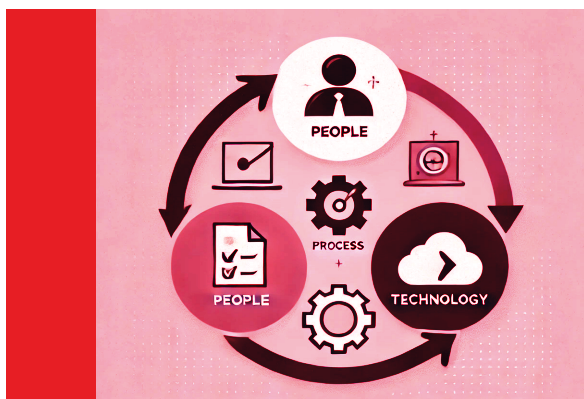
- Effective communication strategies with construction stakeholders such as architects, engineers, general contractors, and trade contractors ensure alignment with the company's focus on quality.
- Creation and enforcement of a well-defined process and governance model that supports the company's aim for constant innovation and reliable product delivery.
- Streamlined communication with architectural engineers and general contractors.
- Protection of intellectual property and confidential information.
- Compliance with company standards for information management and collaboration.

ENABLING THE SECURED EXCHANGE OF TRUSTED INFORMATION SERVICES ALIGNS WITH THE COMPANY'S THREE (3) STRATEGIC PRIORITIES:

Accelerating Growth: We support efficient construction of large capital projects globally, ensuring precise management of information flow and using automation tools for compliance and effective communication.

Improving Execution: Our methods enhance the deployment of capital and ensure shareholder value and technological advancement.

Advancing Culture: We promote a collaborative environment focused on efficient workflows and transparency, facilitating change across People, Process, and Technology.



DOMAINS OF CHANGE FOR PEOPLE, PROCESS, AND TECHNOLOGY

- **People:** Strict control over information flow and access to platforms like BIM360 and SharePoint.
- **Process:** Robust user access protocols and timely content dissemination through approved platforms.
- **Technology:** Development and use of automation tools for compliance and efficient information access.

WHAT YOU GET

TRANSFORMATIVE RESULTS

Access Sciences' BIM tailored offering demonstrates how strategic management of information in complex, multinational projects can directly contribute to the enterprise strategic priorities, driving growth, improving execution, deploying capital effectively, and evolving corporate culture in line with its transformation goals.

MAXIMIZED VALUE

Physical assets are typically deployed to maximize return on asset investment. Information should be thought of as an asset in the same way. Our BIM services are tailored to maximize the ROI for your information assets.